



The Downs, Harlow, CM20 3RH

Geoffrey Matthew Estates are delighted to offer this two bedroom, mid terrace, freehold, house in the popular residential area of The Downs. Ideally located to access local schools, transport links and amenities. The property itself is very well maintained, with two double bedrooms, ample living space and a well tended and low maintenance rear garden.

Early viewings are very highly recommended!

Offers In The Region Of £325,000

The Downs, Harlow, CM20 3RH



- Two Bedrooms
- Well Presented
- Mid Terrace
- Low Maintenance Rear Garden
- Freehold
- Ideally located for Schools, Amenities & Transport Links.

Entrance Hall

Lounge

13'8 x 14'3 (4.17m x 4.34m)

Kitchen

9'8 x 17'8 (2.95m x 5.38m)

First Floor Landing

Bedroom

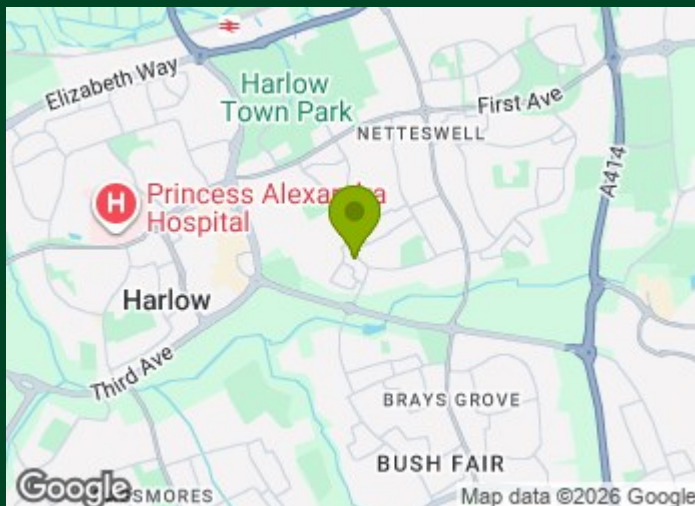
9'7 x 14'8 (2.92m x 4.47m)

Bedroom

9'7 x 10'11 (2.92m x 3.33m)

Bathroom

5'5 x 6'9 (1.65m x 2.06m)



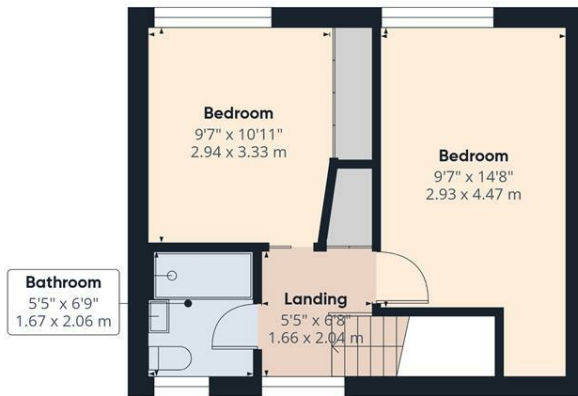
Directions



Floor Plan



Floor 0



Floor 1



Approximate total area⁽¹⁾
718 ft²
66.7 m²

(1) Excluding balconies and terraces

Calculations reference the RICS IPMS 3C standard. Measurements are approximate and not to scale. This floor plan is intended for illustration only.

GIRAFFE360



Council Tax Details

Harlow Band C

These particulars, whilst believed to be accurate are set out as a general outline only for guidance and do not constitute any part of an offer or contract. Intending purchasers should not rely on them as statements of representation of fact, but must satisfy themselves by inspection or otherwise as to their accuracy. No person in this firm's employment has the authority to make or give any representation or warranty in respect of the property.

